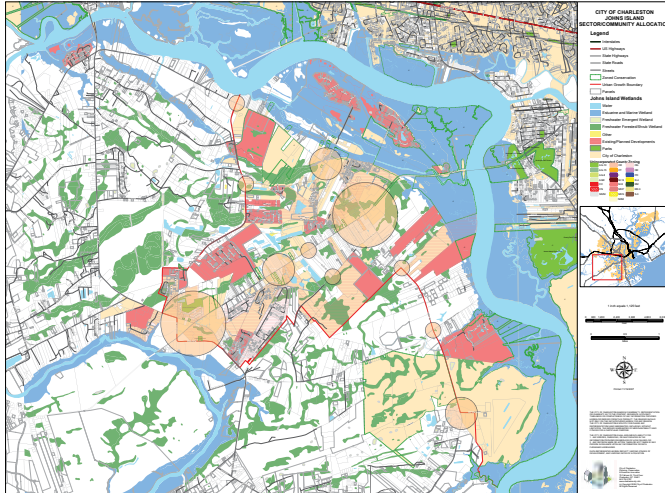


# Charleston, SC SmartCode



Graphic by TPUDC

Location: Charleston, SC  
Type: John's Island SmartCode & Sector Plan  
Charrette: 2008. FTD was the SmartCode consultant to Town Planning Urban Design Collaborative  
Status: Approvals pending  
Project Size: 72 square miles  
Contact: Joshua Martin, Planning Director Emeritus (843) 247.2057  
Brian Wright, TPUDC Founding Principal (877) 777-3387

## Description:

John's Island is a barrier island that is just south of the historic core of Charleston, SC. The island is experiencing growth pressures and the task was to provide for new development to come in the form of compact villages instead of the suburban sprawl. Fisher Town Design was the SmartCode specialist for TPUDC. Fisher Town Design analyzed the existing conditions in the island, assisted in the public workshops, the calibration of the SmartCode and the design of the village at Maybank Hwy. and Bohicket Rd.



Charrette Plan of the Bohicket Rd. and Maybank Hwy Village



Angel Oak, circa 2007



Image of planned SmartCode T4 Zone for John's Island



Picturesque Street in Charleston